

Summary of CEMARS® certification:

Barhale Holdings Plc



Barhale Holdings Plc meets the requirements of CEMARS® certification having measured its greenhouse gas emissions in accordance with ISO 14064-1:2006 and committed to managing and reducing its emissions in respect of the operational activities, excluding Joint Ventures.

Introduction¹

Barhale are a UK based business operating in the environmental, transport and energy sectors, where we provide integrated solutions primarily to regulated, blue chip customers based on our core capabilities of tunnelling, utilities, mechanical & electrical and civil engineering. This inventory reports into the CEMARS programme.

As one of the UK's largest privately owned infrastructure specialists, with over 900 personnel, we operate a preferred model of self-delivery, with a directly employed, national workforce and in-house fabrication, supply and plant operations. Some regions have developed Joint Ventures or Partnerships with companies and clients to form strong working groups.

Our values, consistent since the company was first established, continue to be our conscience and are the main driver of how we do business.

Reducing carbon emissions has been one of Barhale's headline Key Performance Indicators (KPIs) since 2006. Up until 2018 our approach to a reduction in carbon footprint was focussed on our most significant contributors; transport and site fuel use. These two sources produced more than 70% of Barhale's total carbon emissions in 2017.

Focus has been spent in several key areas to reduce site fuel use; plant specification, project design, planning and operational set up. Particular focus has been placed on ensuring that our sites have access to a mains electricity supply rather than the traditional use of generators. Where electrical hook up is not possible we have adopted the use of eco welfare cabins, particularly at satellite working areas and small construction sites. For example, at Clove Road, a major storm-water flood alleviation scheme for Thames Water, involving sinking 6m diameter deep shafts and drainage tunnels in a large residential area of East London affecting around 11,000 homes, the use of satellite solar powered welfare units reduced the over site fuel consumption by approximately 10%.

The 2018 company target for carbon reduction will consider all sources of carbon as measured in this report. The objective is estimated as 80 tonnes of CO₂e emissions per £1m turnover. The nature of our works means carbon usage varies regionally dependent on location, area covered and work load. Regional targets are therefore going to be developed to ensure appropriate targets are set for each business unit.

Boundary

Figure 1 below shows the organisational structure used for describing the organisation's operational greenhouse gas (GHG) emissions, and what business units were included in the inventory in the context of the entire organisational profile. Joint ventures have been excluded from this inventory.

¹ **Disclaimer:** This Disclosure Statement is a summary of the verified information considered for certification and the certification decision. It should not be taken to represent the full submission for certification. Whilst every effort has been made to ensure that the information in this Disclosure Statement is accurate and complete, Enviro-Mark Solutions Limited does not, to the maximum extent permitted by law, give any warranty or guarantee relating to the accuracy or reliability of the information.

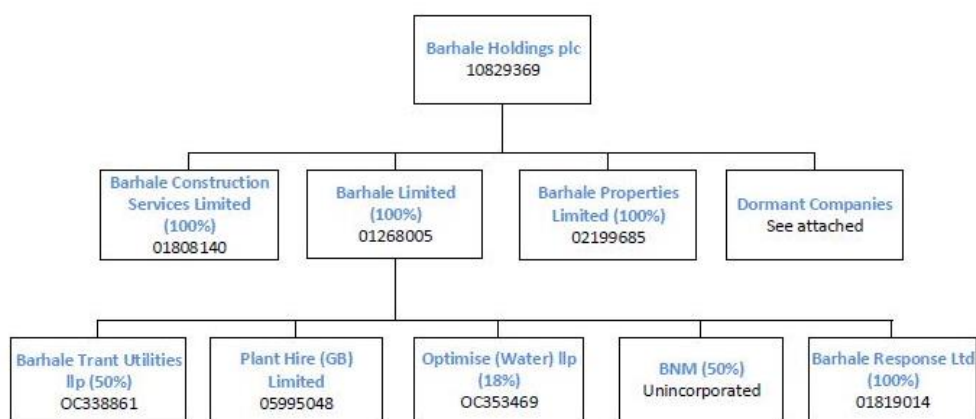


Figure 1: Organisational structure showing business units included and excluded

Consolidation approach

An operational control consolidation approach was used to account for emissions.

Base year – 01/07/2017 - 30/06/2018

Measurement period – 01/07/2017 - 30/06/2018

Emissions source inclusions – The operational GHG emissions for the organisation by emissions source are shown in Figure 2 below.

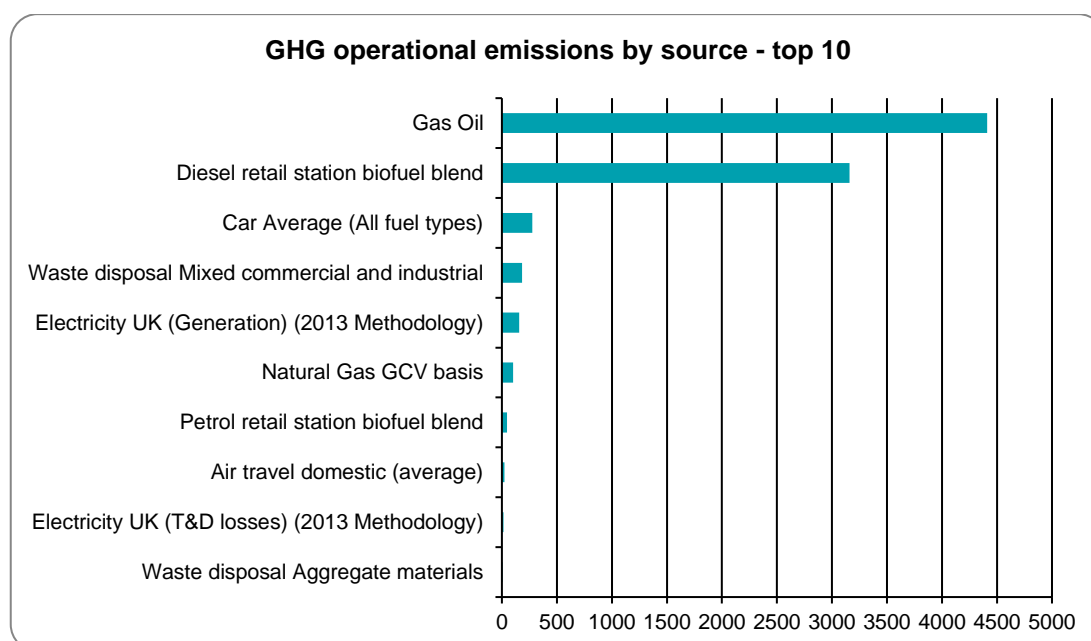


Figure 2: GHG emissions by emissions source

Emissions as tonnes of carbon dioxide equivalents (tCO₂e) for this period were:

Scope	tCO ₂ e
Scope 1	7,719.36
Scope 2	156.81
Scope 3 Mandatory	508.40
Scope 3 Additional	0.00
Scope 3 One time	0.00
Total gross emissions	8,384.57

Emissions intensity – 52.08 tCO₂e per £M gross turnover.

Emissions source exclusions – The following emissions sources were excluded from the inventory for this measurement period:

Excluded emissions
Freight, Taxis & Air travel (long & short haul) scope 3 are <i>de minimis</i>
HFCs from A/C scope 1 is <i>de minimis</i>

Emissions reduction commitments – A GHG emissions management plan and reduction targets have been developed. Targets have been set to align with the targets identified within Barhale's ISO50001 Energy Management Reduction Plan. These consist of 2.5% reduction per £million turnover and to stabilise the diesel consumption per £million turnover to that of the base year. Gas oil and diesel have been selected for reduction action as they are Barhale's top emission sources.

Verified by – Achilles Assessment Services

Data quality score – High

Threshold of materiality – Excluded emissions do not exceed 5% of the total footprint for organisation stated.

Level of assurance – Reasonable

Certification status – CEMARS certified organisation

Certificate number – 2018091J

Valid until – 10 October 2019

Barhale Holdings Plc, Bescot Crescent, Walsall, WS1 4NN
+44(0)7903 882397. amin.badrudin@barhale.co.uk