

Summary of carboNZero certification:



Brother International (NZ) Limited

Year 3 of 3 year certificate period

Brother International (NZ) Limited meets the requirements of carboNZero^{Cert™} certification having measured its greenhouse gas emissions in accordance with the requirements of ISO 14064-1:2006, committed to managing and reducing its emissions and neutralised its remaining unavoidable emissions through the cancellation of an appropriate number of verified carbon credits in respect of the operational activities of its organisation.



Introduction¹ – Brother has had a presence in the New Zealand market for over 50 years. In that time Brother has grown to be the leading providers of print and imaging equipment, sewing machines and labelling hardware in New Zealand. Products Brother offers include; laser printers and multi-functions, inkjet multi-function centres (MFCs), fax machines, labellers, label printers, and a wide range of home and industrial sewing machines. Brother also offer a range of cost effective lease and cost per page deals to meet the changing needs of small to medium size and corporate businesses. Brother services the retail, corporate and business to business markets.

Brother aims to fulfil its corporate social responsibilities at ever higher levels through continuous commitment to environmental challenges, to raise environmental activities to among the best in the industry, and to instil a strong sense of pride so that employees feel truly proud to be part of Brother.

Boundary – Figure 1 shows what has been included in the context of the entire organisational profile. The parts of the structure (business units) in blue have been identified as being within this emissions inventory. The parts of the structure (business units) in green have been identified as being excluded from the inventory. The percentage figures indicate the level of ownership by the entity undergoing certification.

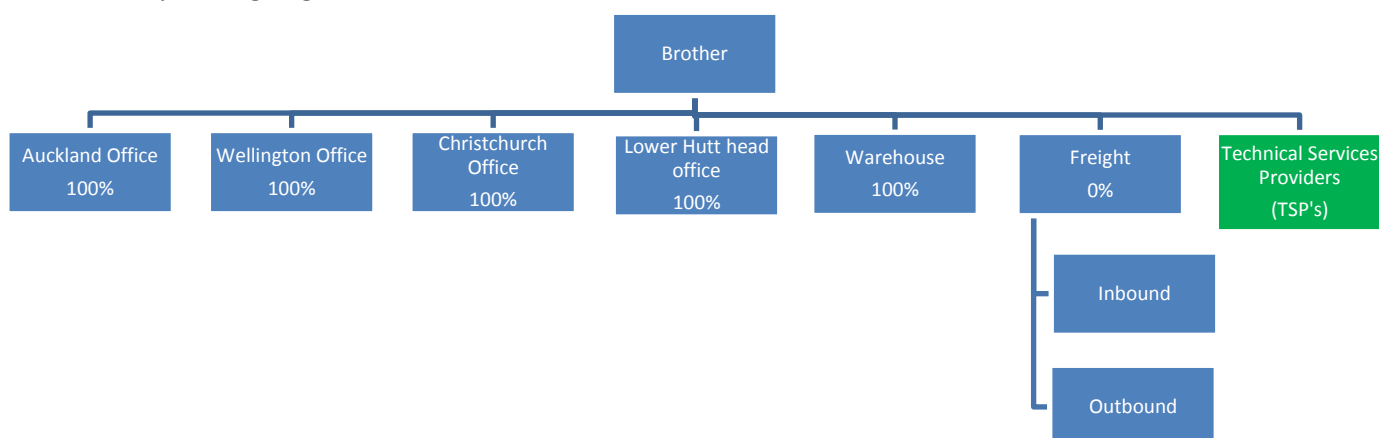


Figure 1: Organisational structure showing business units included and excluded.

¹**Disclaimer:** This Disclosure Statement is a summary of the verified information considered for certification and the certification decision. It should not be taken to represent the full submission for certification. Whilst every effort has been made to ensure that the information in this Disclosure Statement is accurate and complete, Enviro-Mark Solutions Limited does not, to the maximum extent permitted by law, give any warranty or guarantee relating to the accuracy or reliability of the information.

Summary of carboNZero certification:



Brother International (NZ) Limited

Year 3 of 3 year certificate period

Consolidation approach – The operational control consolidation approach has been used to account for operational emissions with reference to the methodology described in the GHG Protocol and ISO 14064-1:2006 standards.

Base year – 01/04/2011 to 31/03/2012

Measurement period – 01/04/2013 to 31/03/2014

Emissions source inclusions – The operational GHG emissions for the organisation by emissions source are shown in Figure 2 below.

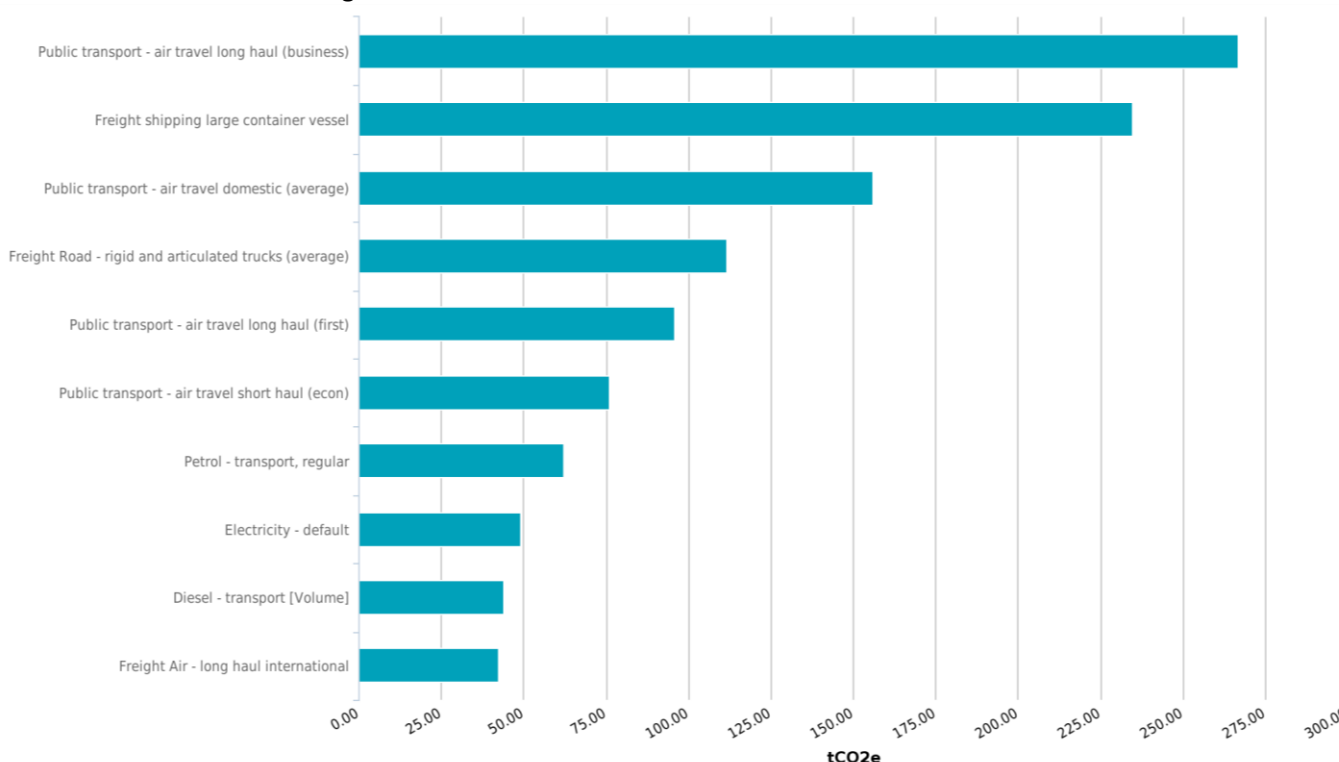


Figure 2: GHG emissions by emissions source.

Emissions as tonnes of carbon dioxide equivalents (tCO₂e) for this period were:

Emissions summary by scopes		Units
Scope 1 total	140.83	tCO ₂ e
Scope 2 total	49.09	tCO ₂ e
Scope 3 total	1,022.27	tCO ₂ e
Mandatory scope 3	-	tCO ₂ e
Additional scope 3	7.18	tCO ₂ e
One-time scope 3	-	tCO ₂ e
Total inventory:	1,219.38	tCO ₂ e

Emissions source exclusions – The following emissions sources were excluded from the inventory for this measurement period:

Summary of carboNZero certification:



Brother International (NZ) Limited

Year 3 of 3 year certificate period

- Technical Service Providers (TSP's) are excluded as they are contracted service providers where Brother has no control over their emission activities.
- Emissions arising from expense claim under taxi usage has been excluded from this inventory as this has been deemed *de minimis*.
- During the 2011/12 reporting year the Christchurch office was impacted by a major earthquake which resulted in a temporary arrangement whereby all Christchurch based staff worked from home for the first half of this measurement period. Emissions from electricity until October 2013 resulting from working from home have been excluded as it is beyond the scope of the defined reporting.

Emissions reduction commitments – A GHG emissions management plan and reduction targets have been developed.

- Reduce purchased electricity by 6% from baseline by 2018
- Reduce emissions from freight air travel long haul by 30% from baseline by 2018

Emissions reduction report against last year's plan – There has been a decrease of in scope 1 and scope 2 of 15.7 tCO₂e between the current year (Apr 2013 – Mar 2014) and the base year and a reduction in emissions intensity of 1.53 tCO₂e, based on a 3 year rolling average.

Offset – 1220 Guohua Wulate Zhongqi Chuanjing Phase II Wind Farm credits have been cancelled on the carboNZero register and will be cancelled (or equivalent) on the relevant external registry within one month of certification. Specific details of cancellation, including serial numbers, will be available on the external registry: www.vcsregistry.com.

Verified by – Enviro-Mark Solutions Limited

Data quality score – Good

Threshold of materiality – Excluded emissions do not exceed 5% of the total footprint within the organisation boundary stated.

Level of assurance – Reasonable

Certification status – carboNZero certified organisation

Certificate number – 2013040J, Year 3 of 3 year certificate period

Valid until – 22 March 2016